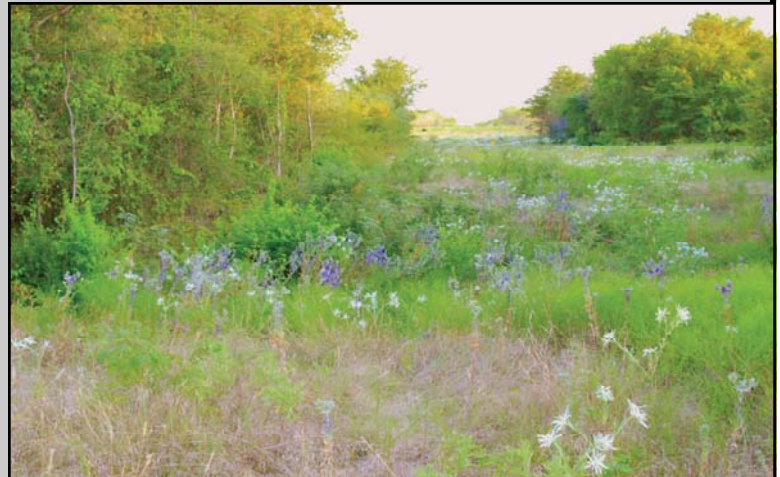


12.73 Acres Blooming Grove /Cryer Creek area



JUST IMAGINE THE POSSIBILITIES!

12.73 acres rolling terrain in Blooming Grove-Cryer Creek area. BGISD, Fenced, Seasonal creek with lots of hardwoods and wildlife cover. Nice views, excellent site for building your dream home in the country.

Offered at \$42,000

Blue Sky Country REAL ESTATE

www.BlueSkyCountry.com

Farm & Ranch, Homes, Commercial,
Recreation and Investment Properties

Robert Phipps
972-351-4710

Susan McCall
972-672-2317



NW CR 1390, Looking East



Front View from NW CR 1390

128 S. Fordyce Street Blooming Grove, TX 76626 Office: 903.695.2978 Fax: 903.695.2980

 www.BlueSkyCountry.com 

Information contained herein has been obtained from the owner of the property or obtained from other sources that we deem reliable. We have no reason to doubt its accuracy, but we do not guarantee it.



Directions:

From Blooming Grove go north on FM 55 3.4 miles to FM 2930-RT, go approx 3.7 miles to NW CR 1390-RT, go approx .5 miles on left.



Driving Distance To:

Dallas– 58 miles

Waco– 56 miles

Ennis– 21 miles

Waxahachie– 33 miles

Corsicana– 13 miles

Hillsboro– 29 miles

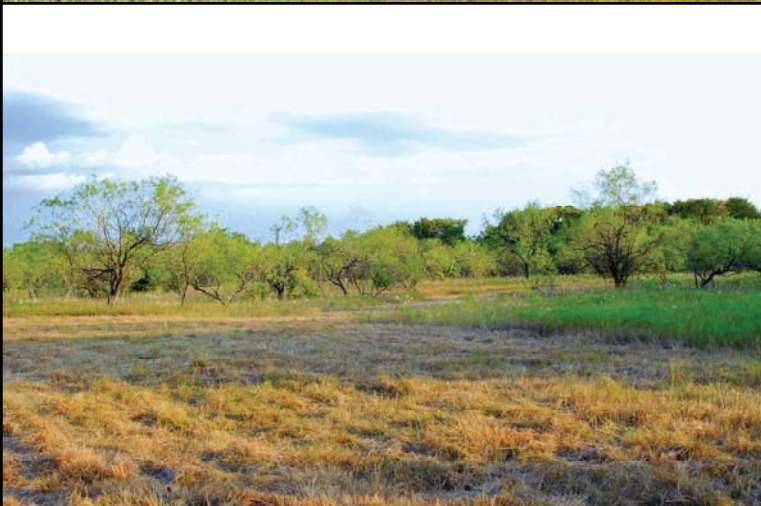
Blue Sky Country REAL ESTATE

www.BlueSkyCountry.com

Farm & Ranch, Homes, Commercial,
Recreation and Investment Properties

Robert Phipps
972-351-4710

Susan McCall
972-672-2317



128 S. Fordyce Street Blooming Grove, TX 76626 Office: 903.695.2978 Fax: 903.695.2980

 www.BlueSkyCountry.com 

Information contained herein has been obtained from the owner of the property or obtained from other sources that we deem reliable. We have no reason to doubt its accuracy, but we do not guarantee it.